

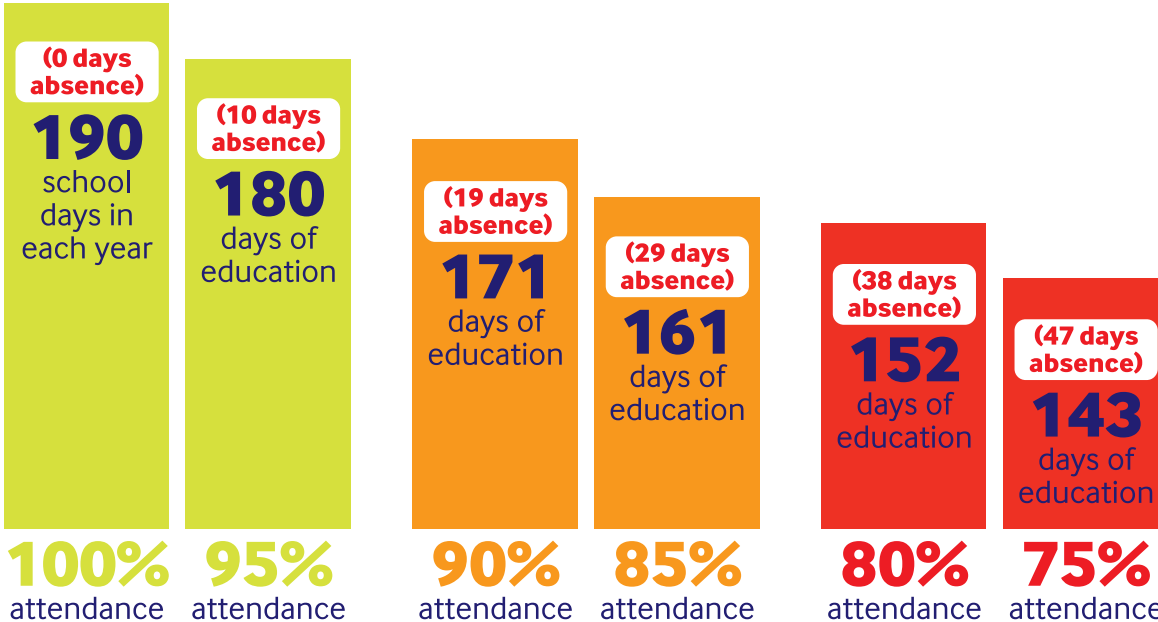
Good attendance means...

being in school at least 95% of the time or 180 to 190 days

175 days not at school!

All this time for shopping, holidays and appointments

365 days in a calendar year



Best chances of success.

"Well Done!"

Poor attendance - less chance of success.

"I'm worried"

Very poor attendance - serious impact on education and reduces life chances.

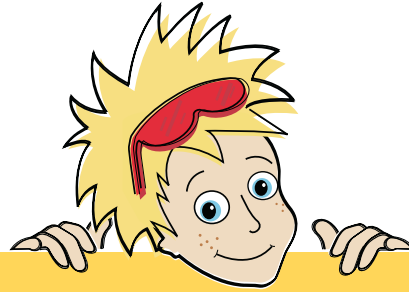
"I'm seriously concerned!"



Did you know? A two week holiday in term time means that the highest attendance a child can achieve is 94.7%

Every Schoolday Counts

Attend, enjoy, achieve



Good Attendance means...

...being in school at least 95% of the time, or 180-190 days!

This means that there are 175 non school days to:

- Take holidays
- Visit family
- Go shopping
- Attend routine appointments.

Did you know that whilst children are in school they:

- Make new friends
- Learn and enjoy new experiences
- Feel safe and listened to
- Grow in confidence
- Take part in school trips, events, teams and clubs
- Keep up with school work and homework
- Can achieve their full potential
- Have better career prospects
- Learn how to look after themselves and be healthy
- Are made to feel special when they do well
- Meet and help people in the community
- Are rewarded for good or improved attendance.

As a parent/carer you can help by:

- Telling your child how important school is
- Praising your child's achievements and celebrating their success
- Organising non-urgent medical appointments after school

- Helping your child get into routines at bedtimes and breakfast times
- Encourage healthy eating and exercise
- Organising your child's equipment, PE kit, bus fares etc the night before school
- Taking time to talk to your child about what they have done in school and any problems they might have.

Every Schoolday Counts will help by:

- Offering your child's school all the support they need
- Rewarding and celebrating your child's good or improved attendance
- Encouraging friendly competition
- Running exciting campaigns to motivate children to attend school
- Providing an information and advice service to parents/carers

Remember, if your child is going to be absent...

- Contact the school on the first day of absence
- Advise the school as to how long you think your child will be absent, if possible
- Bring a note of explanation to school when your child returns and find out what work they may have missed.

Every Schoolday Counts in Bromley