



Sowe Valley Primary School

Newsletter

Tel: 02476 456063

email: admin@sowevalley.coventry.sch.uk

website: www.sowevalley.coventry.sch.uk

24th January 2025

Dear Parents/Carers,

Our pupil of the half term assembly was last Friday, a big well done to Isaac, Elius, Vithus, Jacob, Nidha and Adam, what an achievement!

Our after school activities started this week. It was lovely to see so many of the children enjoying these extra curricular sessions. We do still have places available. If your child is interested in joining, please let the office know.

The children are very excited with the return of our reading competition which started on Monday. Every child who reads 5 times per week for a minimum of 5 minutes per evening is entered into a draw. Every Monday, a winner from each class is drawn at random and they receive a prize and certificate. The class with the most readers also receives an award. The results will be available on Google Classroom each week.

Have a lovely weekend

Emma White

Headteacher

Pre-School Places

Our Pre-School is currently full and we have limited spaces available for September 2025. Please ask at the office if you would like to reserve a place.

Volunteers

We are looking for volunteers to listen to children read. If you have a couple of hours per week to spare, please let the office know. You will need to complete a DBS application which the school will fund.

Dates for your diary

29th January - Year 2 trip

4th February - Year 5 trip

13th March - Year 2 trip (part 2)

Birthdays this week

Haider - Pre-School

Mohsin - Reception

Term Dates

2024/2025

Autumn Term

Monday 3rd September 2024 to
Friday 25th October 2024
(Monday 2nd September is a
teacher training day)

Half Term Holiday

Monday 28th October 2024 to
Friday 1st November 2024

Autumn term (continued)

Tuesday 5th November 2024 to
Friday 20th December 2024
(Monday 4th November is a
teacher training day)

Spring term

Tuesday 7th January 2025 to
Friday 14th February 2025
(Monday 6th January is a teacher
training day)

Half Term Holiday

Monday 17th February 2025 to
Friday 21st February 2025

Spring Term (continued)

Monday 24th February 2025 to
Friday 11th April 2025

Easter Holiday

Monday 14th April 2025 to
Friday 25th April 2025

Summer Term

Monday 28th April 2025 to
Friday 23rd May 2025

Bank Holiday Monday 5th May
2025

Half Term Holiday

Monday 26th May 2025 to
Friday 30th May 2025

Summer Term (continued)

Monday 3rd June 2025 to
Friday 18th July 2025
(Monday 2nd June & Monday 21st
July are teacher training days)

Star of the week

Y1 - Isaac Keraj/Anthony

Y2 - Ruby-Drew/Remy

Year 3 - Daniel/Amelia M

Year 4 - Isaac T/Jensen J

Year 5 - Aurora/Kyle

Year 6 - Charlie/Dylan

Writer of the week

Y1 - Misbahullah

Y2 - Navya

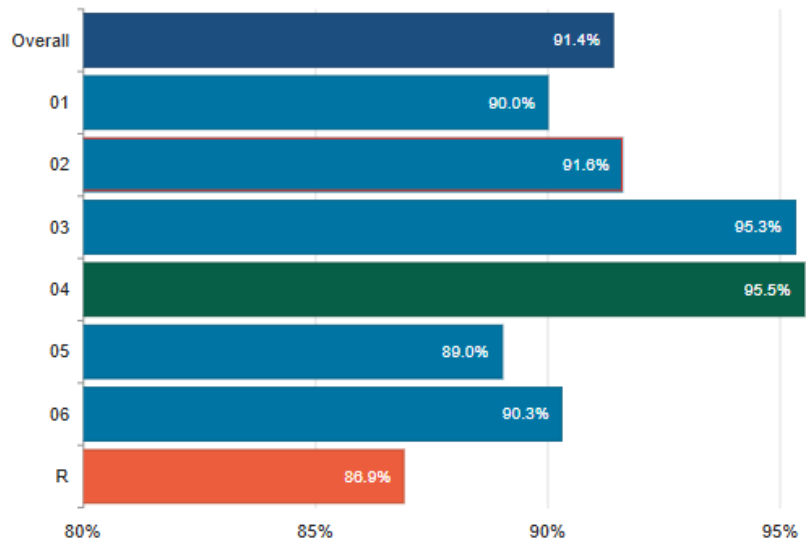
Year 3 - Chase

Year 4 - Albert

Year 5 - Meredith

Year 6 - Nevaeh

Attendance 13th - 17th January 2025



ATTENDANCE

WHY IS IT IMPORTANT?

ABSENCE FROM SCHOOL

Children are required by law to attend school 190 days per year. The Government states that every pupil's attendance should be at least 95%.

How do YOU measure up?

Attendance	Days Absent	Weeks Absent	Lessons Missed
95%	9 Days	2 Weeks	50 Lessons
90%	19 Days	4 Weeks	100 Lessons
85%	29 Days	6 Weeks	150 Lessons
80%	38 Days	8 Weeks	200 Lessons
75%	48 Days	10 Weeks	250 Lessons
70%	57 Days	11.5 Weeks	290 Lessons
65%	67 Days	13.5 Weeks	340 Lessons

89% & Below
Drastic effect on
academic achievement

95%-90%
Cause for
concern

100%-96%
Excellent

